

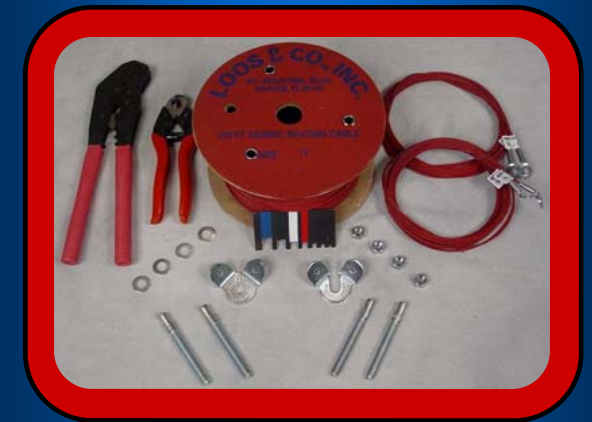
SAMPLE OF PAST PROJECTS

- Bachelor Enlisted Quarters, KS
- Bighorn, Primm, NV
- BJC South Hospital, St. Louis, MO
- Boeing Learning Center, St. Louis, MO
- Calpine Pastoria, Lebec, CA
- Cedars Sinai Hospital, Los Angeles, CA
- Children's Hospital, St. Louis, MO
- Chrysler Plant, Fenton, MO
- Dow Chemical, Kansas City, MO
- Edward Jones Dome (St. Louis Rams), St. Louis, MO
- Enterprise Leasing World Headquarters, Clayton, MO
- FAA Aeronautical Center, OK
- FAA Building, Long Island, NY
- Family Arena, St. Charles, MO
- Federal Detention Center, Honolulu, HI
- Fort Sill, OK
- Ft. Gillem, GA
- Ft. Riley, KS
- G.M. Plant, Wentzville, MO
- Harrah's Casino, St. Louis & Kansas City, MO
- Hilton Hawaiian Village, Honolulu, HI
- Jefferson City Correctional Center, MO
- Lawrenceville Prison, IL
- MasterCard Int'l World Headquarters, O'Fallon, MO
- Memphis Convention Center, Memphis, TN
- Mercy Medical Center, Ft. Scott, KS
- NORAD, Peterson AFB, CO
- Newmont Gold Mine, NV
- Overland Park Convention Center, KS
- Pacific Command Headquarters, Camp Smith, HI
- Pepsi Plant, St. Louis, MO
- Pfizer Global Research & Development, San Diego, CA
- Pro West, Sacramento, CA
- Sausalito/Marin County Sanitation District, Sausalito CA
- Savvis Center (St. Louis Blues), St. Louis, MO
- Southeast Missouri Correctional Center, MO
- St. Johns Energy Center, Washington, MO
- St. Louis University, St. Louis, MO
- State Prison, Bonne Terre, MO
- Station Casino, St. Charles & Kansas City, MO
- U.S. Courthouse, Cape Girardeau, MO
- U.S. Disciplinary Barracks, Ft. Leavenworth, KS
- U.S. Embassy, Albania
- U.S. Embassy, Bangladesh
- U.S. Embassy, Beijing
- U.S. Embassy, Jamaica
- UCLA, CA
- University Hospital, Center for Adv Medicine, Denver, CO
- Washington University, St. Louis, MO
- Whiteman AFB, MO

SEISMIC SOLUTIONS
92 ARGONAUT SUITE 130
ALISO VIEJO CA 92656



SEISMIC BRACING
SEISMIC RESTRAINT
ENGINEERING
CALCULATIONS
BRACING LAYOUT
CONSULTING



888 SEISMIC

(888) 734-7642

WWW.SEISMICSOLUTIONSINC.COM

The Loos & Co., Inc. UL Listed Seismic Wire Rope/Cable™ Bracing Assemblies comply with ASCE 19 for Structural Applications of Steel Cables for Buildings, as required by the FEMA, NEHRP, IBC, CBC, OSHPD, UBC, BOCA, SBCCI and other Building Codes. ASCE 19 requires Galvanized Pre-Stretched Cable and Permanent End Fittings that maintain the break strength of the cable.



12-CBL
250' Size 12 Cable
Load Rating: 600 lb
Weight: 5 pounds



18-CBL
250' Size 18 Cable
Load Rating: 1100 lb
Weight: 8 pounds



36-CBL
250' Size 36 Cable
Load Rating: 2667 lb
Weight: 13 pounds



48-CBL
250' Size 48 Cable
Load Rating: 4400 lb
Weight: 25 pounds

- UL Listed**
- Color Coded**
- OSHPD Pre-Approved (OPA-0619)**
- Pre-stretched**
- Break Strength Certified**

CABLE KIT
(Sizes 12, 18, 36, 48)

Includes:

- Four cables
 - Two URC clips
 - Four oval sleeves
 - Four concrete anchors, washers & nuts
- (Kit is customizable for specific needs)



Oval Sleeves
12-SLV
18-SLV
36-SLV
48-SLV



URC
(Universal Restraint Clip)



URCR
(Retrofit)

Sizes: 1/4", 3/8", 1/2", 5/8", 3/4", 7/8", 1", 1 1/4"



C7 Felco Cable Cutter



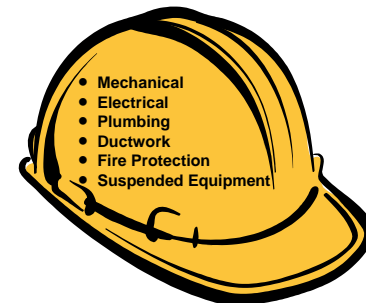
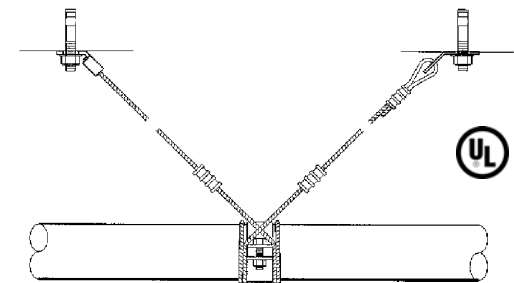
C9 Felco Cable Cutter



1-3-SBHS
Hand Crimping Tool



1-SBHS
Large Crimping Tool



**MADE
IN
USA**

